

stock code 300247

SAUNAKING

**PORTABLE
SAUNA**



ANHUI SAUNAKING CO.,LTD.

HEADQUARTER

No. 34 Hehuan Road, High-Tech Development Zone, Hefei, Anhui, China

Tel: +86-551-62355467, 62355469, 62355470

Fax: +86-551-65329191

WUHU FACTORY

No.58 Fuqiang Road,Jiuzi Avenue,Jiujiang Economic Development Zone,Wuhu,Anhui,China

www.chinasauna.com

Email: sales@chinasauna.com

CE ISO9001 SAA SASO 

We reserve the right to make modifications without prior notice

ANHUI SAUNAKING CO.,LTD.

CATALOGUE 2015



About Anhui Saunaking Co., Ltd.

Established in 1995, Saunaking has three major production plants in Hefei, Wuhu and Germany, total area is 130,000 square meters, mainly selling infrared saunas and its derivatives. It's a comprehensive group which combines researching, manufacturing, sales, service and health research. It was awarded of the "A-class enterprise of Customs", "Famous export brand in Anhui province", "Famous brand of Anhui province", "The sixteenth Asian Games in the public welfare enterprise", "Anhui Provincial Bureau of sports fitness, sports rehabilitation designated products" and other honors. It's also the member of Chinese Health Association, the model member of the "preventive treatment of disease" project.

In July of 2011, Saunaking successfully listed on the Shenzhen Stock Exchange Gem (Stock abbreviation: Saunaking, Stock code: 300247).

In May of 2012, Saunaking attacked the international market that we 100% took over German top sauna brand "Saunalux", integrating domestic and overseas resources, promoting the value of Saunaking brand and its products.

In February of 2013, Saunaking was awarded of the "permit for the medical device production enterprise", which marks Saunaking gains the state and industry recognition, getting into health industry with large-scale.

Global distribution network is the guarantee of Saunaking's fast development. It has 22 offices in the country, with more than 300 authorized dealers. In the world, Saunaking's products are sold in more than 70 countries and regions, covering Europe, America, Middle East and Southeast Asia.

PORTABLE STEAM SAUNA

What is Portable Steam Sauna ? Are you feeling drained after a long and stressful day in the office or you are enduring the stubborn muscle pain ? Portable steam sauna is the environmentally friendly equipment which is useful for everyone looking for health .

BENEFITS

People can benefit a lot by using steam sauna .some of the benefits include relief from joint pain and muscle soreness ,improving circulation ,reducing inflammation,and relief from allergies and asthma .it also serves as a beauty aid with benefits such as weight loss due to detoxification,beautiful skin ,and cellulite reduction .

TYPICAL APPLICATIONS

It is widely used by health care professionals,such as medical SPA's,chiropractors,medical doctors ,nurses ,acupuncturists and those who are seeking better ways to improve people's overall health .

PRINCIPLE

Our portable steam sauna has a tub tent that covers the body and allows the head to remain outside ;beautician can give users a facial and body treatment at the same time ,A steam generator is used to create water vapor at high levels of humidity ,The heat and humidity may bring healthy benefits ranging from aiding stress relief to body cleaning ,smoothing aching muscles or arthritis .

FEATURES

Unlike other steam systems that waste gallons of the water ,our steam sauna takes very little space and only use little water ,In this way our eco-friendly equipment conserves the amount of the water used and also requires a little electricity ,You may enjoy our sauna anytime and anywhere in your home ,such as living room or bedroom when you watch TV ,read newspaper or magazine ,etc.

HOW TO USE?

It is designed to take only 2-3 minutes to reach the constant sauna temperature of 50℃ by adding proper water to the steam generator,together with the additional essential oil or Chinese herbs . The timer enables you to select your desired time ,The inner Anti -dry protection completely ensures your safety while using it . "No water ,Auto off " .



JYS-A2

INCLUDING

- Tub tent
- Electric air pump
- Steam generator
 - Power: 850 or 800W
 - 1.5L or 1.8L and generate 60 min steam
 - No water auto off
- Steam hose
- Instruction manual

Tent size: 800x840x1050mm

20°FCL: 1200 sets (1.5L)

20°FCL: 1107 sets (1.8L)



JYS-A4

INCLUDING

- Tub tent
- Electric air pump
- Steam generator
 - Power: 850 or 800W
 - 1.5L or 1.8L and generate 60 min steam
 - No water auto off
- Steam hose
- Instruction manual

Tent size: 1000x840x540x1050mm

20°FCL: 1132 sets (1.5L)

20°FCL: 990 sets (1.8L)



JYS-A6

INCLUDING

- Tub tent
- Electric air pump
- Steam generator
 - Power: 850 or 800W
 - 1.5L or 1.8L and generate 60 min steam
 - No water auto off
- Steam hose
- Instruction manual

Tent size: 950x950x1100mm

20'FCL: 943 sets



JYS-B4

INCLUDING

- Tub tent with hollow board support
- Head cover
- Sponge mat
- Foldable chair
- Steam generator
 - Power: 850 or 800W
 - 1.5L or 1.8L and generate 60 min steam
 - No water auto off
- Steam hose
- Instruction manual

Tent size: 780x710x980x1270mm

20'FCL: 220 sets



JYS-B2

INCLUDING

- Tub tent
- PVC support tube
- Steam generator
 - Power: 750W
 - 1.5L or 1.8L and generate 60 min steam
 - No water auto off
- Steam hose
- Instruction manual

Tent size: 840x720x1000mm

20'FCL: 960 sets (1.5L)

20'FCL: 890 sets (1.8L)



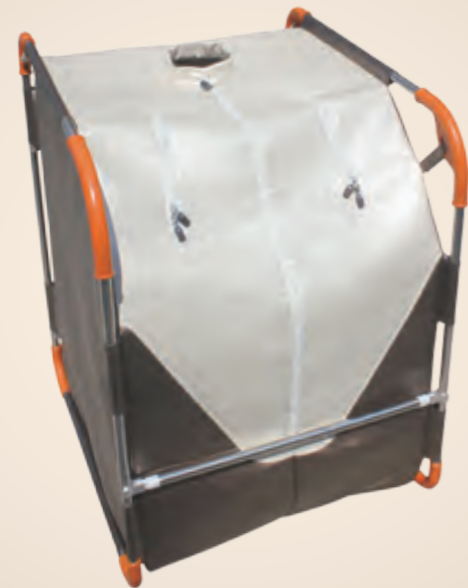
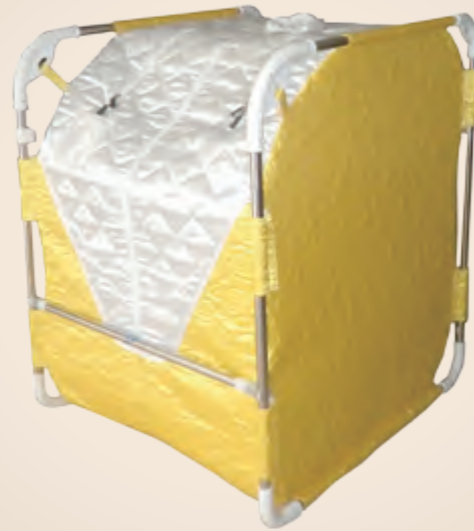
JYS-B9

INCLUDING

- Outside high imitation insulation leather with stainless steel frame
- Inside PVC-coated waterproof cloth
- Plastic corner protection tube & connector
- Steam generator
 - Power: 800W
 - 1.8L and generate 60 min steam
 - No water auto off
- Steam hose
- Instruction manual

Tent size: 890x760x1060mm

20'FCL: 200 sets



JYS-FS01-S

INCLUDING

- Single-layer foldable bathtub
- Steam generator
 - Power 850 or 800W
 - 1.5L or 1.8L and generate 60 min steam
 - No water auto off
- Steam hose
- Instruction manual

Tent size: 800x800x1040mm
20'FCL: 645 sets



JYS-FS01-M

INCLUDING

- Multi-layer foldable bathtub
- Steam generator
 - Power 850 or 800W
 - 1.5L or 1.8L and generate 60 min steam
 - No water auto off
- Steam hose
- Instruction manual

Tent size: 800x800x1040mm
20'FCL: 535 sets(1.5L)
20'FCL: 518 sets(1.8L)



JYS-FS03

INCLUDING

- Multi-layer foldable bathtub
- Steam generator
 - Power 850 or 800W
 - 1.5L or 1.8L and generate 60 min steam
 - No water auto off
- Steam hose
- Instruction manual

Tent size: 800x800x1040mm
20'FCL: 535 sets(1.5L)
20'FCL: 518 sets(1.8L)



JYS-FS01-D

INCLUDING

- Double-layer foldable bathtub
- Steam generator
 - Power 850 or 800W
 - 1.5L or 1.8L and generate 60 min steam
 - No water auto off
- Steam hose
- Instruction manual

Tent size: 800x800x1040mm
20'FCL: 645 sets



JYS-B5

INCLUDING

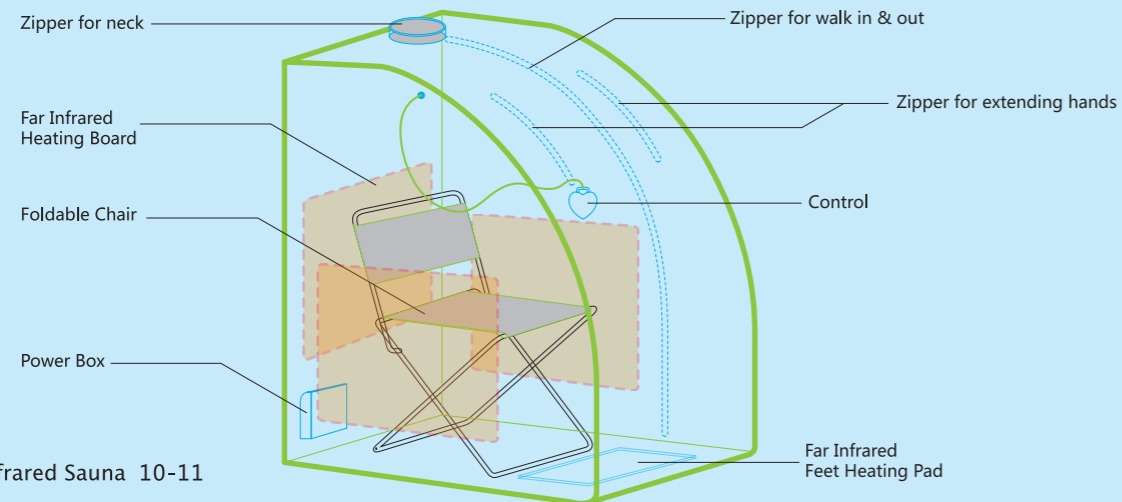
- Tub tent
- Carbon Infrared heating panel
- Feet infrared heating pad
- Digital sauna time/temp controller
- Foldable chair
- Power 630W
- Instruction manual

Tent size: 780x710x980mm

20'FCL: 249 sets

HIGHLIGHTS

- Far infrared heater
- Low cost energy used
- Heat up within 5 minutes
- Light weight and suitable to use anywhere
- Set up or close down within 1 minute
- Controller for adjusting sauna time and temperature freely



Portable Infrared Sauna 10-11

JYS-M9

INCLUDING

- Outside hemlock+ high imitation insulation leather with carbon infrared heating board
- Inside PVC coating waterproof cloth
- Bottom with hemlock laths
- Infrared heating foot pad
- Digital sauna time/temp. controller
- Power 650W
- Instruction manual

Tent size: 730x780x1000mm

20'FCL: 120 sets

